

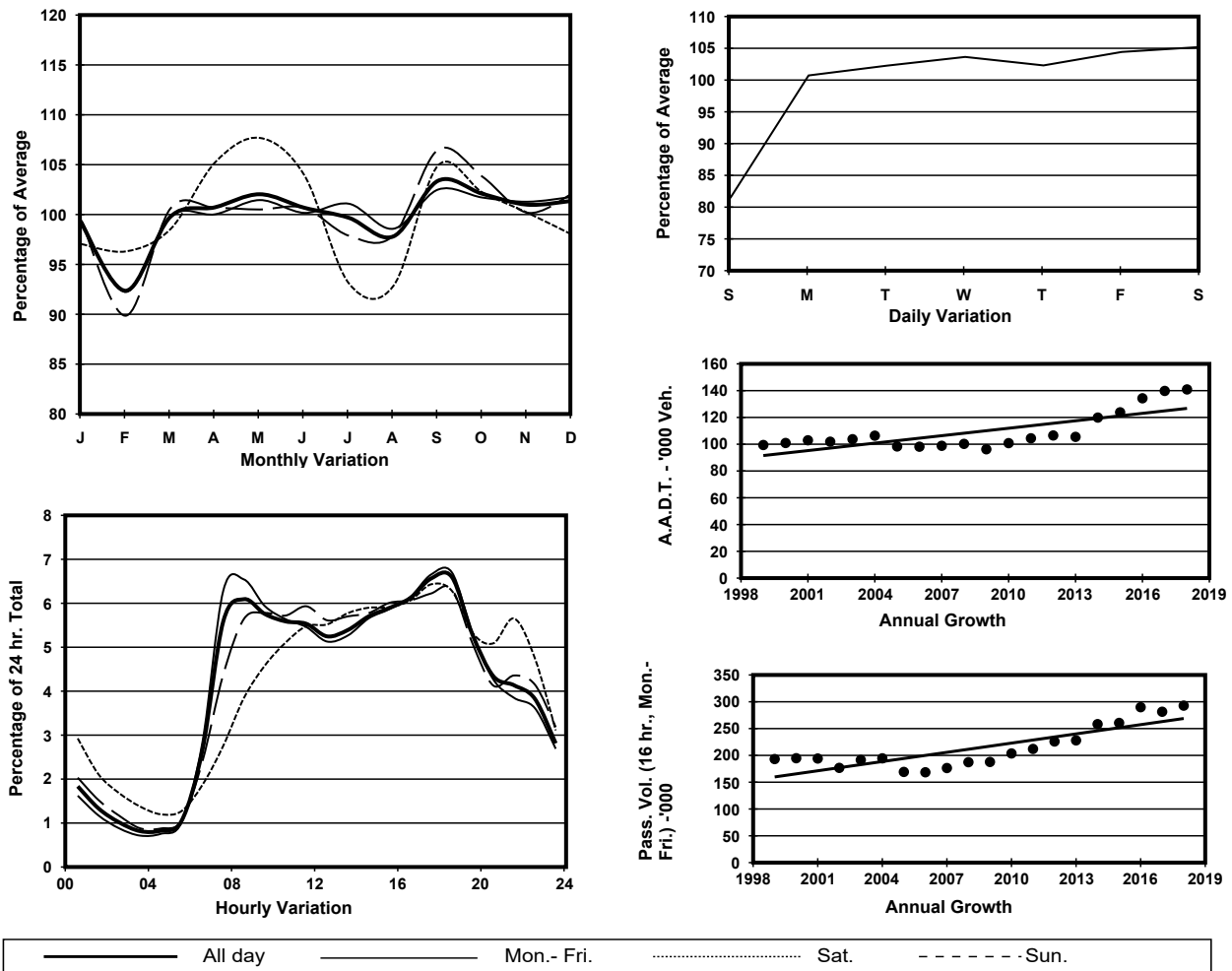
YEAR 2018

Location Screenline Y-Y(Boundary between Tuen Mun & Yuen Long)

Stations on Cordon/Screenline

5025 and 6213

## 1. TRAFFIC FLOW VARIATION AND GROWTH



## 2. TRAFFIC CHARACTERISTICS (BY DIRECTION)

Parameter	All - Day	Mon. - Fri.	Sat.	Sun.
<b>EAST BOUND</b>				
A.A.D.T.	71760	74480	76200	58740
R 12 / 24 - %	68.7	70	67.9	61.5
R 16 / 24 - %	87.8	88.6	86.8	84
AM Peak Hour	0800-0900	0800-0900	0900-1000	0900-1000
One-way flow at AM peak hour	4240	4780	4090	2490
T - % (AM)	-	22.6	-	-
PM Peak Hour	1700-1800	1700-1800	1800-1900	1700-1800
One-way flow at PM peak hour	4850	5140	4940	3760
T - % (PM)	-	21.9	-	-
Prop.of commercial vehicles - 16 hr.	-	23	-	-
<b>WEST BOUND</b>				
A.A.D.T.	69140	71560	73870	57180
R 12 / 24 - %	71.5	72.6	70.5	65.9
R 16 / 24 - %	87.5	88	86.9	85
AM Peak Hour	0700-0800	0700-0800	0900-1000	0900-1000
One-way flow at AM peak hour	4390	5110	4580	2820
T - % (AM)	-	21.7	-	-
PM Peak Hour	1800-1900	1800-1900	1800-1900	1700-1800
One-way flow at PM peak hour	4460	4670	4550	3700
T - % (PM)	-	12.4	-	-
Prop.of commercial vehicles - 16 hr.	-	21.1	-	-

## 3. OTHER INFORMATION AND COMMENT

**4. Vehicle classification and occupancy - Monday to Friday**

Time		Class of vehicle									
		Motor Cycle	Private Car	Taxi	Private LB	PLB	Goods veh.		Non Fr. Bus	Fr. Bus	
							Light	M & H		SD	DD
0700-0800	Pro	2.5	39.1	13.3	1.0	2.0	18.3	16.2	5.9	0.1	1.6
	Ocp	1.0	1.3	2.2	6.0	13.1	1.4	1.2	11.8	25.2	30.3
0800-0900	Pro	2.1	47.3	9.4	0.7	1.6	17.7	16.7	3.6	0.1	0.9
	Ocp	1.0	1.3	2.1	4.5	15.1	1.5	1.1	12.6	26.5	32.9
0900-1000	Pro	1.2	38.2	8.8	0.7	1.5	22.5	22.8	2.8	0.1	1.3
	Ocp	1.1	1.3	1.9	3.0	14.9	1.4	1.1	13.2	20.0	16.3
1000-1100	Pro	0.8	32.1	10.6	1.1	1.2	24.4	25.3	3.0	0.1	1.4
	Ocp	1.1	1.5	1.9	1.9	12.3	1.3	1.1	18.3	19.7	22.3
1100-1200	Pro	1.3	34.5	9.9	0.9	1.4	24.4	24.2	2.1	0.1	1.3
	Ocp	1.1	1.2	2.2	1.7	12.1	1.3	1.2	15.9	19.9	23.4
1200-1300	Pro	1.5	34.3	7.7	0.7	1.8	25.3	23.8	3.5	0.2	1.2
	Ocp	1.0	1.4	1.9	2.0	9.3	1.4	1.1	13.3	20.8	20.8
1300-1400	Pro	1.2	36.2	10.8	0.6	1.2	22.9	23.7	2.2	0.2	1.2
	Ocp	1.1	1.5	2.1	3.9	12.5	1.4	1.1	11.0	25.7	22.9
1400-1500	Pro	1.1	32.4	8.6	0.5	1.3	28.7	23.6	2.6	0.1	1.1
	Ocp	1.0	1.5	1.9	1.7	9.6	1.4	1.2	12.7	20.3	24.4
1500-1600	Pro	1.3	34.1	11.9	0.9	1.1	23.8	22.9	2.9	0.2	1.1
	Ocp	1.2	1.5	2.0	3.5	13.0	1.4	1.1	12.5	26.4	27.4
1600-1700	Pro	1.1	36.1	11.6	1.8	1.2	23.1	20.3	3.4	0.1	1.3
	Ocp	1.1	1.4	1.8	3.7	13.1	1.4	1.1	15.6	26.3	28.4
1700-1800	Pro	2.9	41.3	9.5	1.4	1.6	22.8	16.0	3.0	0.2	1.3
	Ocp	1.0	1.4	1.9	2.7	15.0	1.3	1.1	14.1	26.3	27.7
1800-1900 Peak Hour	Pro	3.1	55.9	9.8	0.8	1.6	15.8	9.1	2.7	0.1	1.1
	Ocp	1.1	1.3	2.1	1.7	17.4	1.3	1.0	11.5	29.4	33.9
1900-2000	Pro	1.6	60.2	10.2	0.2	2.0	12.8	7.3	4.2	0.1	1.4
	Ocp	1.1	1.4	1.8	2.4	16.3	1.3	1.1	9.0	21.4	23.8
2000-2100	Pro	2.3	59.7	14.6	0.2	1.6	9.7	5.7	4.3	0.2	1.6
	Ocp	1.0	1.3	1.9	1.7	13.8	1.3	1.1	9.0	27.4	18.8
2100-2200	Pro	2.2	59.3	13.5	0.1	2.3	11.0	7.2	2.7	0.2	1.5
	Ocp	1.2	1.3	1.8	1.0	11.3	1.3	1.1	12.2	15.1	18.5
2200-2300	Pro	2.5	58.4	17.6	0.3	2.1	9.3	6.2	1.8	0.2	1.6
	Ocp	1.2	1.3	1.8	2.0	12.5	1.2	1.1	13.7	18.7	15.6
16 hours	Pro	1.8	42.9	10.8	0.8	1.6	20.1	17.4	3.2	0.1	1.3
	Ocp	1.1	1.4	2.0	3.1	13.4	1.4	1.1	12.7	23.4	24.5

**Legend**

**Pro.** Proportion of vehicles in % (Sum may not add up to 100% due to figure rounding)\*

**Ocp.** Average occupancy of vehicles including both driver and passengers\*

**M&H** Medium and Heavy

**\*** All traffic data are collected from combined bounds except for one way traffic